

**RSCI** Responsible Supply  
Chain Initiative

**HUBTRACTYRES**  
JOURNEY TO THE FUTURE

[www.hubtractyre.com](http://www.hubtractyre.com)



EUROPEAN  
TYRE & RUBBER  
manufacturers'  
association

**YEAR 2025**

# HUBTRAC 2025

Experience the difference. Experience Hubtrac.  
Crafted in Europe. Engineered for the world.

## The Hubtrac Movement

Hubtrac is not just another tyre brand. We're a movement— we uphold the highest standards of social responsibility, environmental stewardship, and ethical supply chain practices. Our European Manufacturing Base is a proud member of the Responsible Supply Chain Initiative (RSCI), ensuring transparency, fairness, and sustainability at every step of our production.

We are also an active member of the European Tyre and Rubber Manufacturers' Association (ETRMA), aligning ourselves with the continent's most rigorous quality, safety, and environmental standards.

These affiliations reflect our ongoing commitment to doing business the right way—for people, for the planet, and for the future of mobility.

## 100% Made in Europe

At Hubtrac, Europe isn't just a location—it's our identity. Our roots run deep across the continent, with our state-of-the-art manufacturing and customer service center proudly based in Serbia. Strategic offices in the UK and Germany further anchor our presence, empowering us to combine precision engineering with world-class logistics. We are not only Europe's boldest new tyre brand—we are its most ambitious.

But our vision doesn't stop at the borders of Europe. We are rapidly expanding across the USA, Canada, Latin America, the Middle East, and Africa, bringing the Hubtrac promise of quality, performance, and innovation to every road we touch.

## Global Vision, Local Precision

Innovation knows no borders. That's why Hubtrac operates research and development centers in the USA, China, and Germany, ensuring our technologies meet the diverse needs of global markets. We complement these with highly specialized sales and production hubs in the USA and Europe — creating a seamless, borderless tyre experience for customers around the world.

## Why Choose Hubtrac?

Hubtrac brings something fresh to the road —led by passion, powered by expertise, and committed to redefining the industry. Our youthful energy fuels our innovation, while our uncompromising approach to quality ensures every tyre is built to outperform expectations.

From rigorous testing to refined craftsmanship, we fuse technology with human insight. Our diverse and forward-thinking team is united by one mission: to drive the future of mobility.

## Meet the Minds Behind the Movement

Hubtrac is guided by seasoned industry leaders with over 20 years of experience in tyre manufacturing and innovation. Our global R&D team spans Europe, the Americas, China, and Southeast Asia—bringing together a wealth of knowledge and a shared passion for excellence. These are the minds setting new benchmarks in tyre performance, safety, and sustainability.



# HUBTRAC TBR

## A World-Class Tyre Brand Made in Europe

The Hubtrac brand is dedicated to providing high-performance tire solutions for commercial vehicles worldwide, featuring two distinct product lines: **Hubtrac 2.0** and **Hubtrac Classic**.

The **Hubtrac 2.0** series is co-designed by experienced engineers from Germany and the United States, integrating cutting-edge tire technologies from Europe and North America. It features proprietary, original tread designs that are fully protected by intellectual property rights. Manufactured in Serbia using a globally leading intelligent manufacturing system, this series excels in durability, handling, and fuel efficiency. As a premium, authentically European-made truck and bus tire, it has already launched 20 SKUs, with plans to expand to 40 SKUs by 2026—offering customers an increasingly comprehensive and superior product experience.

In contrast, the **Hubtrac Classic** series is built on time-tested, industry-proven tread designs and offers a complete product range that covers the full spectrum of TBR applications. Prioritizing cost-effectiveness, this series is designed to provide distributors and end users with stable quality and reasonably priced options, catering to the diverse needs of various market segments.

### Premium Selections of Truck Tyres

Experience peak performance with our premium truck tyre collection. Crafted for durability and precision, our high-end tyres redefine excellence on the road.

Made in Serbia/Thailand

### Six Years Warranty

Hubtrac provides an efficient and standardized after-sales service support system for distributors and their end customers, covering a wide range of areas including product quality issue resolution and logistics exception handling. We are committed to completing issue assessment and resolution within the specified time frame, ensuring that our partners can establish a professional and trustworthy brand image in the end market.

- Rapid response to issues within the product warranty period
- Provision of tire inspection and anomaly analysis reports
- Support for product traceability and improvement recommendations





# HUBTRAC EUROPEAN MANUFACTURING BASE



Overhead view of  
the factory production  
workshop



World-leading full stage  
building machine

Overhead view of  
the office area



Green tire automatic  
logistics transportation  
system



Industry-leading bead  
assembly line



Advanced intelligent  
stereoscopic warehouse

## HUBTRAC MEMBERSHIPS



The Hubtrac European Manufacturing Base is a proud member of the Responsible Supply Chain Initiative (RSCI) and the European Tyre and Rubber Manufacturers' Association (ETRMA)

**RSCI**

Responsible Supply  
Chain Initiative



EUROPEAN  
TYRE & RUBBER  
manufacturers'  
association



# HUBTRAC SIDEWALL DESIGN & NAMING METHORD



**LONG HAUL**



**REGIONAL**



**URBAN**



**ON/OFF ROAD**



**MINE**



**WINTER**

## SIDEWALL DESIGN

## PATTERN NAMING RULES

### REGIONAL

**1**  
**LONG HAUL**  
Wear-resistance and heat-dissipation for high quality and long distance conditions

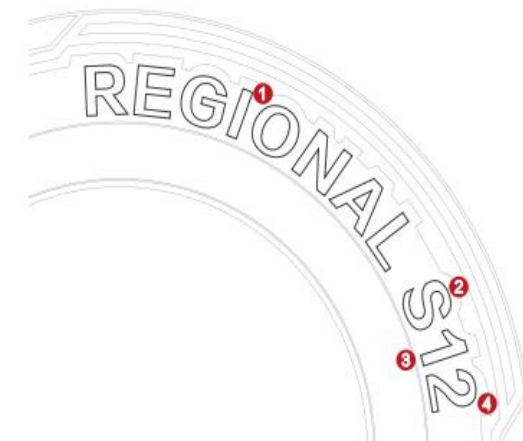
**REGIONAL**  
Durability and applicability for a variety of medium and short distance conditions

**MIXED**  
Cut-resistance and traction for a variety of construction conditions

**MINE**  
Security and traction for extremely stringent mines and forests conditions

**WINTER**  
Maneuvering stability and braking force for snow and ice conditions

**URBAN**  
Wear resistance and handling for a variety of city and intercity conditions



**S**

**2**

**S** : Steer

**D** : Drive

**T** : Trailer

**G** : General

**1**

**3**

Generation serial number

**2**

**4**

Pattern serial number

## NAMING METHORD

# PRODUCT MAP

## HIGHWAY

### DRIVE



### STEER



### TRAILER



## REGIONAL

### DRIVE



### STEER



### TRAILER

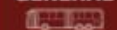


### GENERAL



## URBAN

### GENERAL



## COACH

### GENERAL



## MIXED

### DRIVE



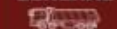
### TRAILER



### STEER



### GENERAL



## MINE

### DRIVE



## WINTER

### DRIVE



### STEER





# HUBTRAC 2.0 PRODUCT MAP

Winter



WINTER S11
385/65R22.5
385/55R22.5
315/70R22.5
315/80R22.5

WINTER D11
315/70R22.5
315/80R22.5

Regional



REGIONAL S23
315/70R22.5
315/80R22.5
295/60R22.5



REGIONAL D22
315/70R22.5
315/80R22.5
295/60R22.5



REGIONAL T22
385/65R22.5

Mixed Service



MIXED G21
13R22.5



MIXED D21
13R22.5
315/80R22.5

High Stress

Use Condition  
Low Stress

Long Haul



HIGHWAY S23
315/70R22.5
315/60R22.6
385/65R22.5



HIGHWAY D23
315/70R22.5
295/60R22.5
315/60R22.5



HIGHWAY T22
385/65R22.5
385/55R22.5

COACH



COACH G21
295/80R22.5

Paved



URBAN G21
275/70R22.5



# HUBTRAC 2.0 TECHNICAL DATA

NO.	Size	HT Pattern	LI/SS	Second LI/SS	Max. Load (Single-KG)	Max. Pressure (Single-KPa)	Max. Load (Dual-KG)	Max. Pressure (Dual-KPa)	Overall Diameter (mm)	Section Width (mm)	Tread Depth (mm)	Tread Width (mm)	EU-RR (Level)	EU-WG (Level)	EU-N (Level)	EU-N (dB)
1	13R22.5	MIXED D21	156/150K	-	4000	875	3350	875	1124	320	21	260	D	A	A	71
2	13R22.5	MIXED S21	156/150K	154/151L	4000	875	3350	875	1124	320	17	250	C	A	A	70
3	275/70R22.5	URBAN G21	152/148J	148/145E	3150	900	2900	900	958	276	16.5	240	C	C	A	71
4	295/60R22.5	HIGHWAY D23	150/147L	-	3350	900	3075	900	926	292	13	270	C	B	B	73
5	295/60R22.5	REGIONAL D22	150/147K	149/146L	3350	900	3075	900	926	292	18	256	E	B	C	75
6	295/60R22.5	REGIONAL S23	150/147L	-	3350	900	3075	900	926	292	14	256	D	B	A	68
7	295/80R22.5	COACH G21	154/149M	-	3750	850	3250	850	1044	298	14.5	256	C	B	A	68
8	315/60R22.5	HIGHWAY D23	152/148L	-	3550	900	3150	900	950	313	14	280	C	B	A	72
9	315/60R22.5	HIGHWAY S23	154/150L	152/148M	3750	900	3350	900	950	313	12	270	B	B	A	70
10	315/70R22.5	HIGHWAY D23	152/148L	154/150M	3550	850	3350	900	1014	312	16.5	273	C	B	B	73
11	315/70R22.5	HIGHWAY S23	156/150L	154/150M	4000	900	3350	900	1014	312	13	270	B	B	A	70
12	315/70R22.5	REGIONAL D22	154/150L	152/148M	3750	900	3350	900	1014	312	20	275	E	B	C	75
13	315/70R22.5	REGIONAL S23	156/150L	154/150M	4000	900	3350	900	1014	312	15.5	270	C	B	A	68
14	315/80R22.5	MIXED D21	156/150K	-	4000	850	3350	850	1076	312	21	280	D	A	A	71
15	315/80R22.5	REGIONAL D22	156/150L	154/150M	4000	850	3350	850	1076	312	22	262	E	B	C	75
16	315/80R22.5	REGIONAL S23	158/150L	154/150M	4250	900	3350	900	1076	312	15.5	262	D	B	A	68
17	385/55R22.5	HIGHWAY T22	160K	158L	4500	900	-	-	996	386	12.5	330	B	C	A	71
18	385/65R22.5	HIGHWAY S23	164K	158L	5000	900	-	-	1072	389	13.5	310	B	B	A	70
19	385/65R22.5	HIGHWAY T22	164K	158L	5000	900	-	-	1072	389	13.5	322	B	C	A	71
20	385/65R22.5	REGIONAL T22	164K	158L	5000	900	-	-	1072	389	15.5	310	C	A	A	69

# Long Haul Series Tire---HIGHWAY D23

Lower rolling resistance; Lower wet grip and Lower Noisy



	EU-RR (Level)	EU-WG (Level)	EU-N (Level)	NOISY VALUE
315/70R22.5	C	B	B	73

**HIGHWAY D23**

## 3D Interlocking Technology



- 3D interlocking technology helps to control the movement of the tread blocks to avoid abnormal block wear.
- Innovative "SOCT" technology helps to provide excellent mileage and handling performance
- Variable depth of blades helps to ensure even wear of tread and good wet braking performance



**3PMSF Symbol**  
Can be used in winter conditions

New Appearance



Even Wear



Low heat generation



ST steel cord



New compound

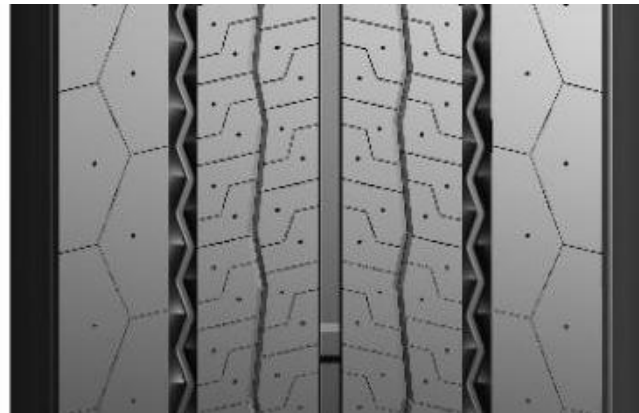


# Regional Steer Axle---REGIONAL S23

High mileage performance /Wide range of use/EU label CAA68



**REGIONAL S23**



	EU-RR (Level)	EU-WG (Level)	EU-N (Level)	NOISY VALUE
295/60R22.5	D	A	A	68
315/70R22.5	C	A	A	68
315/80R22.5	D	A	A	68

## 3D Interlocking Technology



- 3D interlocking technology helps to control the movement of the tread blocks to avoid abnormal block wear.
- Variable depth of blades helps to ensure even wear of tread and good wet braking performance
- Stone ejectors in groove help to prevent stone trapping and puncture to enhance casing toughness and retreadability.



**3PMSF Symbol**  
Can be used in winter conditions

New Appearance



Even Wear



Low heat generation



ST steel cord



New compound





# Regional Drive Axle---REGIONAL D22

High mileage performance /Wide range of use



	EU-RR (Level)	EU-WG (Level)	EU-N (Level)	NOISY VALUE
295/60R22.5	E	B	C	75
315/70R22.5	E	B	C	75
315/80R22.5	E	B	C	75

**REGIONAL D22**

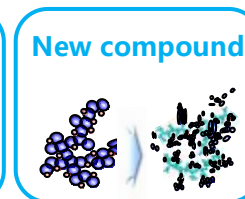
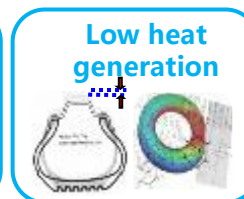
## 3D Interlocking Technology



- 3D interlocking technology helps to control the movement of the tread blocks to avoid abnormal block wear.
- Innovative “SOCT” technology provides support on excellent mileage and handling performance.
- Variable depth of blades helps to ensure even wear of tread and good wet braking performance



**3PMSF Symbol**  
Can be used in winter conditions



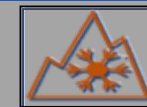
## Regional Drive Axle---REGIONAL T22

High mileage performance /Wide range of use



- Multi-blades design helps to provide constant grip
- Innovative “SOCT” technology provides support on excellent mileage and handling performance.

	EU-RR (Level)	EU-WG (Level)	EU-N (Level)	NOISY VALUE
385/65R22.5	C	A	A	69



**3PMSF Symbol**  
Can be used in winter conditions

## REGIONAL T22

New Appearance



Even Wear



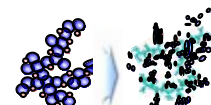
Low heat  
generation



ST steel cord



New compound

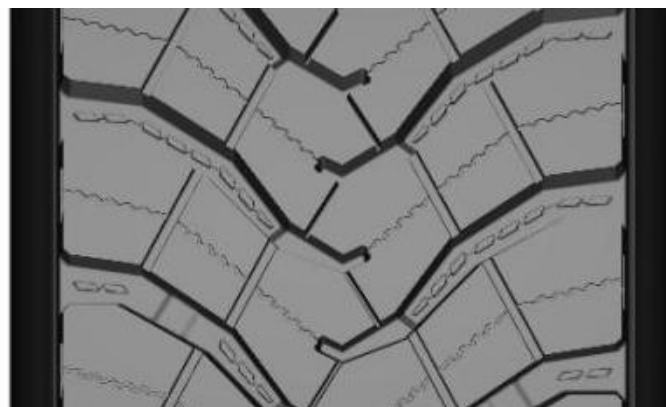


## On/Off Road Drive Axle---MIXED D21

Strong / High mileage performance

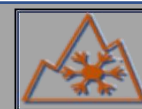


**MIXED D21**



	EU-RR (Level)	EU-WG (Level)	EU-N (Level)	NOISY VALUE
13R22.5	D	A	A	71
315/80R22.5	E	A	A	71

- Bionic pattern design improves the grip on muddy road.
- V-shape vibrational grooves prevent stone retention.
- Patterned mold design improves tire appearance.



**3PMSF Symbol**  
Can be used in winter conditions

New Appearance



Even Wear



Low heat generation



ST steel cord



New compound





# Long Haul Series Tire---HIGHWAY S23

Lower rolling resistance/Lower wet grip and Lower Noisy



	EU-RR (Level)	EU-WG (Level)	EU-N (Level)	NOISY VALUE
315/60R22.5	B	B	A	69
315/70R22.5	B	B	A	69
385/65R22.5	B	B	A	69

- Innovative “SOCT” technology provides support on excellent mileage and handling performance.
- Larger land/sea ratio provide better wear performance
- Multi-sipes design helps to provide constant grip
- “V shape” groove help to prevent stone trapping and puncture to enhance casing toughness and retreadability.



**3PMSF Symbol**  
Can be used in winter conditions

## HIGHWAY S23

New Appearance



Even Wear



Low heat generation



ST steel cord



New compound



# Long Haul Series Tire---HIGHWAY T22

Lower rolling resistance/Lower wet grip and Lower Noisy



	EU-RR (Level)	EU-WG (Level)	EU-N (Level)	NOISY VALUE
385/55R22.5	B	C	A	71
385/65R22.5	B	C	A	71

- Innovative “SOCT” technology helps to provide excellent mileage and handling performance
- Larger land/sea ratio provide better wear performance
- Multi-sipes design helps to provide constant grip
- “V shape” groove help to prevent stone trapping and puncture to enhance casing toughness and retreadability.



**3PMSF Symbol**  
Can be used in winter conditions

## HIGHWAY T22

New Appearance



Even Wear



Low heat generation



ST steel cord

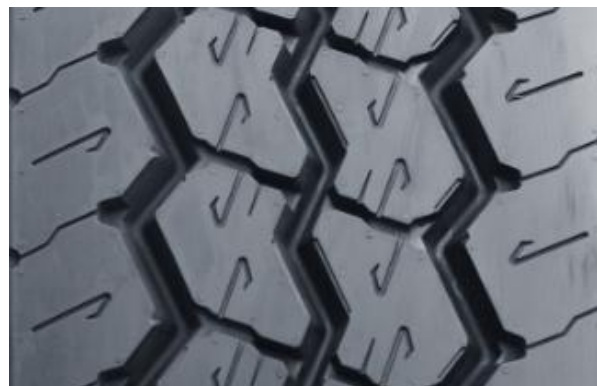


New compound



# On/Off Road Drive Axle---MIXED S21

Strong / High mileage performance



	EU-RR (Level)	EU-WG (Level)	EU-N (Level)	NOISY VALUE
13R22.5	C	B	B	72

- Innovative "SOCT" technology provides support on excellent mileage and handling performance.
- New tread compound helps to improve the tear resistance.
- "V shape" groove help to prevent stone trapping and puncture to enhance casing toughness and retreadability.
- All-position tread design helps to enhance traction on and off the road.



**3PMSF Symbol**  
Can be used in winter conditions

**MIXED S21**

New Appearance



Even Wear



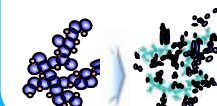
Low heat generation



ST steel cord



New compound





# URBAN G21

Strong / High mileage performance/Lower Noisy



**URBAN G21**



	EU-RR (Level)	EU-WG (Level)	EU-N (Level)	NOISY VALUE
275/70R22.5	C	C	A	71

## 3D Interlocking Technology



- Innovative "SOCT" technology provides support on excellent mileage and handling performance.
- 3D interlocking technology helps to control the movement of the tread blocks to avoid abnormal block wear.
- Variable depth of blades helps to provide constant grip



**3PMSF Symbol**  
Can be used in winter conditions

New Appearance



Even Wear



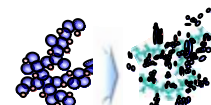
Low heat generation



ST steel cord



New compound



# COACH G21

Lower rolling resistance/Lower wet grip and Lower Noisy



COACH G21



	EU-RR (Level)	EU-WG (Level)	EU-N (Level)	NOISY VALUE
295/80R22.5	B	B	A	70

## 3D Interlocking Technology



- Innovative “SOCT” technology provides support on excellent mileage and handling performance.
- Larger land/sea ratio provide better wear performance
- 3D interlocking technology helps to control the movement of the tread blocks to avoid abnormal block wear.
- Variable depth of blades helps to provide constant grip



**3PMSF Symbol**  
Can be used in winter conditions

New Appearance



Even Wear



Low heat generation



ST steel cord



New compound



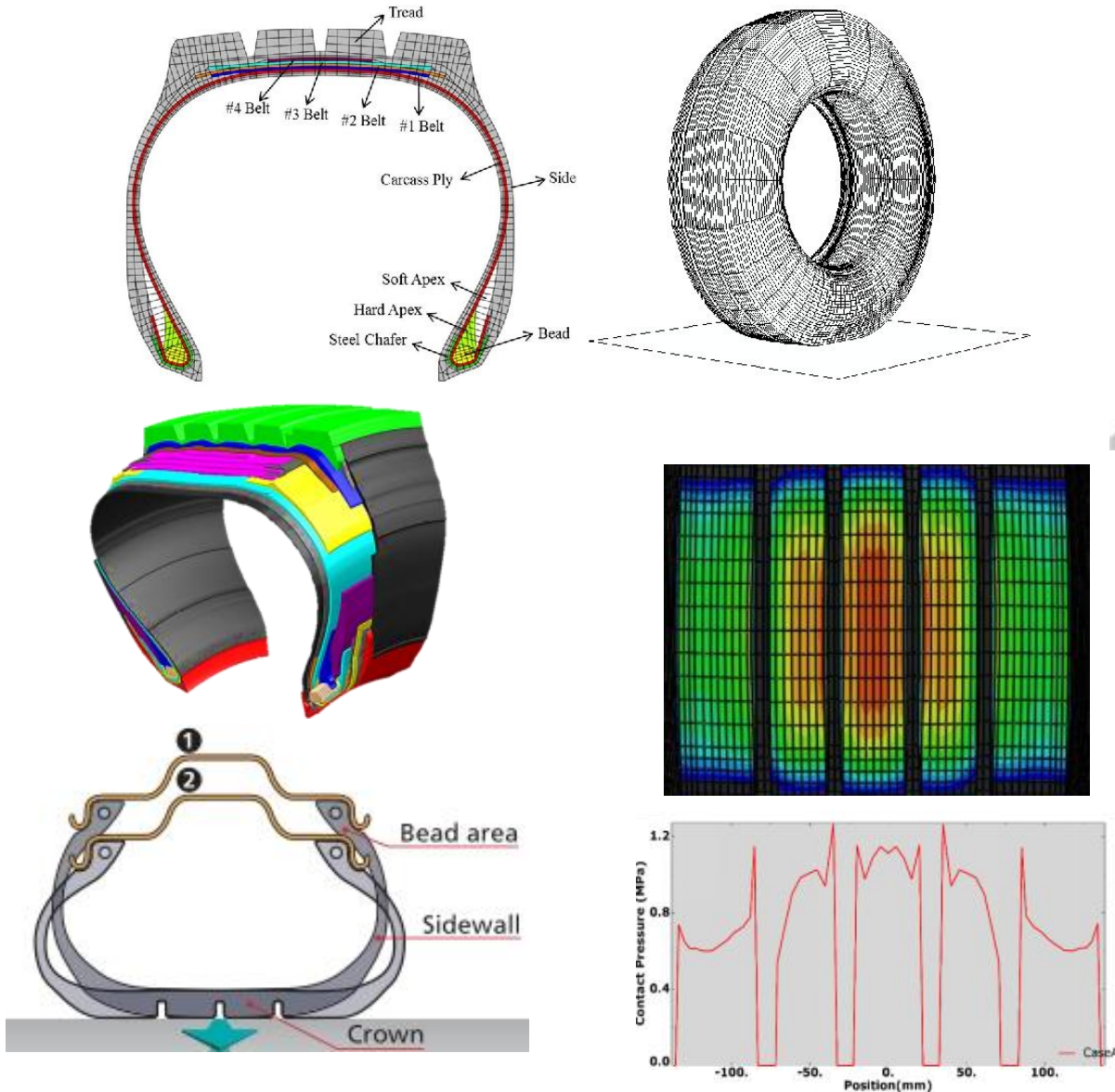


### Advance Tire Manufacturing Equipment

- HUBTRAC Serbia TBR plant is fitted with VMI tire building machine.
- Ensuring
  - High tire building capacity
  - High product quality
  - High level uniformity
  - High repeatability
  - Automation compatible



# VIRTUAL TESTING TECHNOLOGIES



HUBTRAC virtual development and testing help to speed up development process.  
Reduce idea to prototype time.

Currently Hubtrac have various ability to simulate

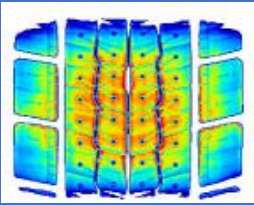
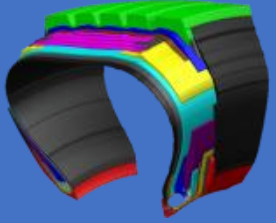
- Rolling resistance
- Stress in tire
- Footprint
- Tire dimension under load
- Noise

# SOCT--Stress Optimization Control Technology



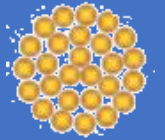
## New structure

Four belt structure to optimized grounding pressure distribution, wear and anti-groove crack upgrade



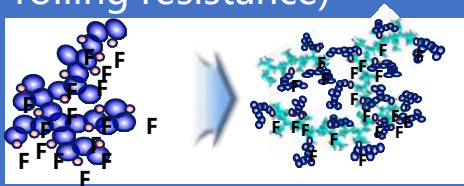
## New cord material

UT ultra-high strength wire and reinforced structure(to ensure safety and service life)



## New Compound

Using a new type of nanoscale low hysteresis loss composite material(Ensure wear and lower rolling resistance)



## New profile & pattern

Account rolling resistance, wet grip and noise performance





# Global R&D CENTRES

7 Divisions in 3 countries (Germany,China, America)





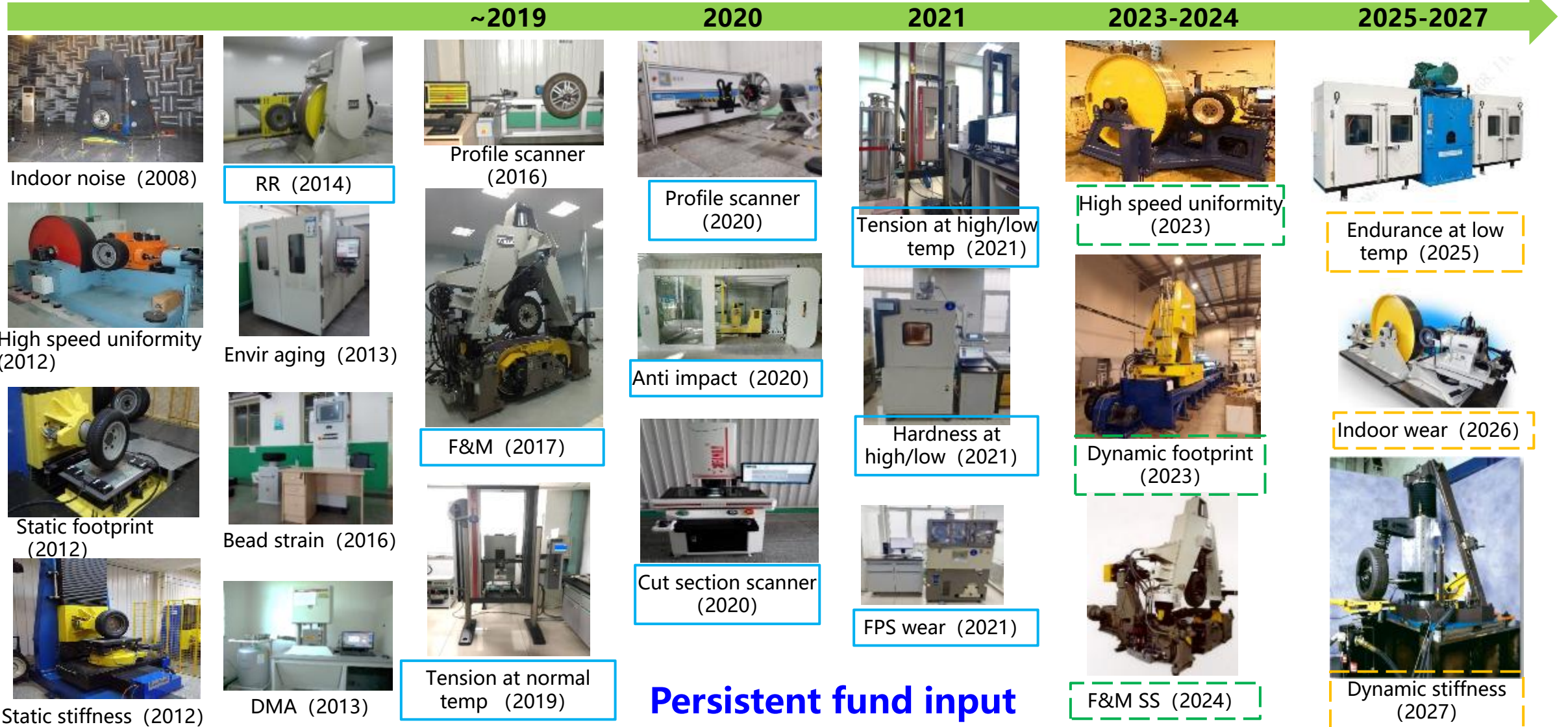
# Testing Capability

Introduce research vehicles and improve test capability

Advanced

Processing

Planned





## PARTNERSHIPS



### Together, We Are Stronger

Hubtrac is a manufacturing enterprise specializing in tire production. We do not directly engage in sales activities in any market. Instead, Hubtrac has a dedicated sales team that works closely with distributors in various regions to drive the expansion and sales growth of the Hubtrac brand in local markets.

Email: [info@hubtractyre.com](mailto:info@hubtractyre.com)

Web: <https://www.hubtractyre.com>;

Address: Jevrejska 1, Zrenjanin, 23000, Republic of Serbia.



**RSCI** Responsible Supply  
Chain Initiative

**HUBTRACTYRES**  
JOURNEY TO THE FUTURE

[www.hubtractyre.com](http://www.hubtractyre.com)



EUROPEAN  
TYRE & RUBBER  
manufacturers'  
association

**YEAR 2025**